



SAN JOAQUIN AREA
FLOOD CONTROL AGENCY

Paradise Cut Bypass Expansion and Multi-Benefit Project

Advisory Committee Meeting
April 2nd, 2024
11.30 am – 1.30 pm

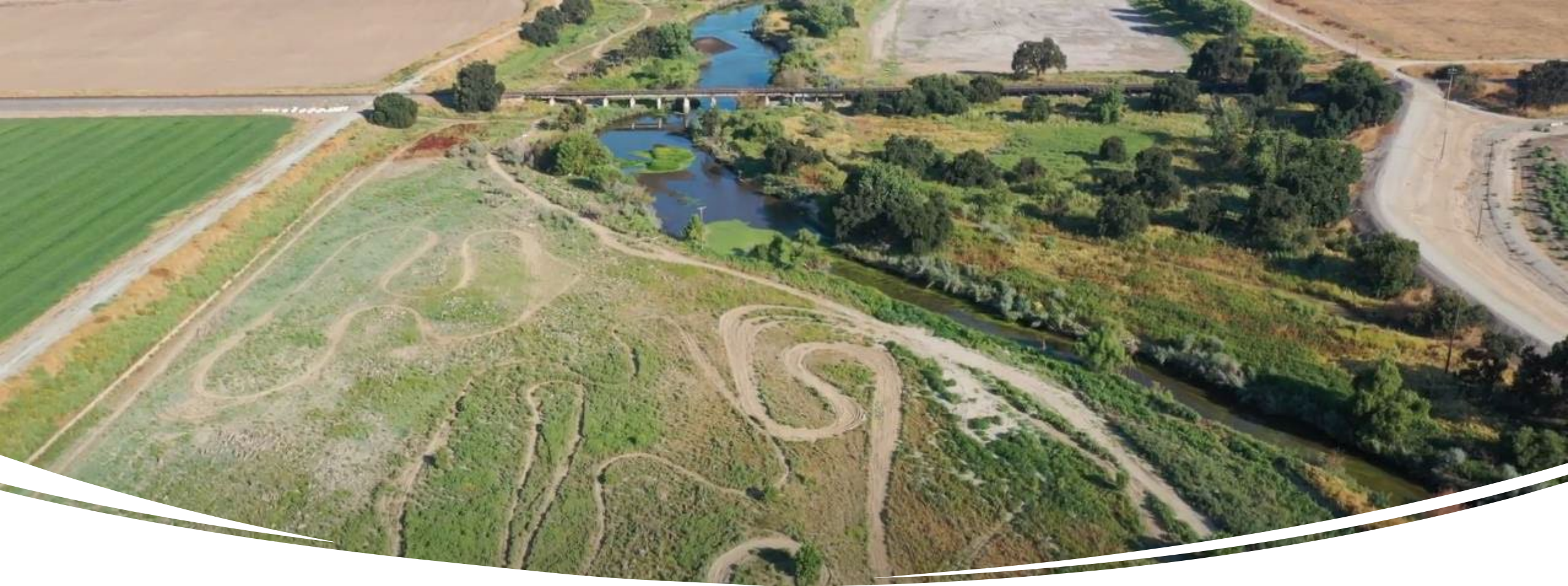
Location: San Joaquin Council of Governments Building
555 E Weber Avenue, Stockton, CA

Glenn.prasad@stocktonca.gov



Advisory Committee Agenda

1. Administrative Matters:
 - A. Roll Call/ Sign up sheet
 - B. Approval of Meeting Minutes and consensus on meeting notes format. [Possible Action]
 - C. Confirmation of Members and Alternates
2. Project Status and Resourcing [Possible Action]
 - A. Presentation on Proposals and Overall Workplan
 - B. Recommendation to SJAFCA Board to approve consultants for the Paradise Cut Bypass Expansion and Multi-Benefit Project [Possible Action]
3. State Updates (DWR, CVFPB)
4. Advisory Committee Comments/ Items for Future Agenda
5. Public Comment
6. Adjournment



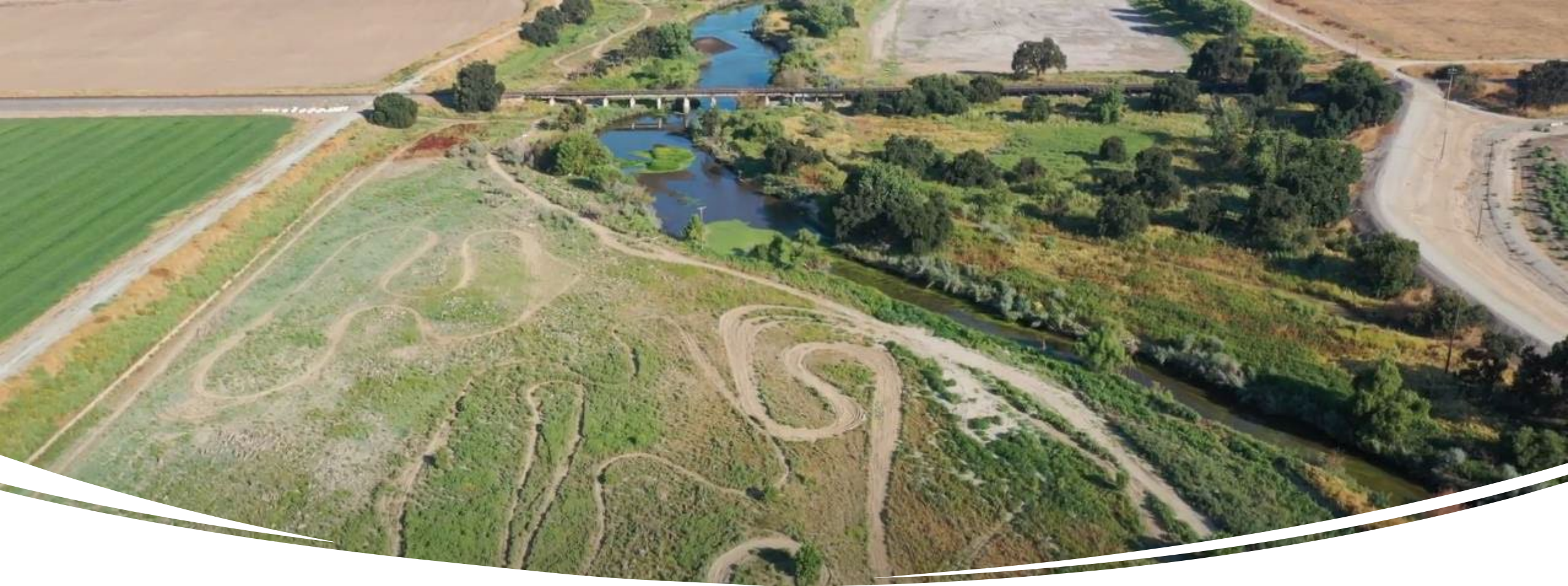
Administrative Matters

- Roll call/ sign up sheet
- **Approval of meeting notes [action]** and consensus on format
- Confirmation of members and alternates

Committee Members and Alternates

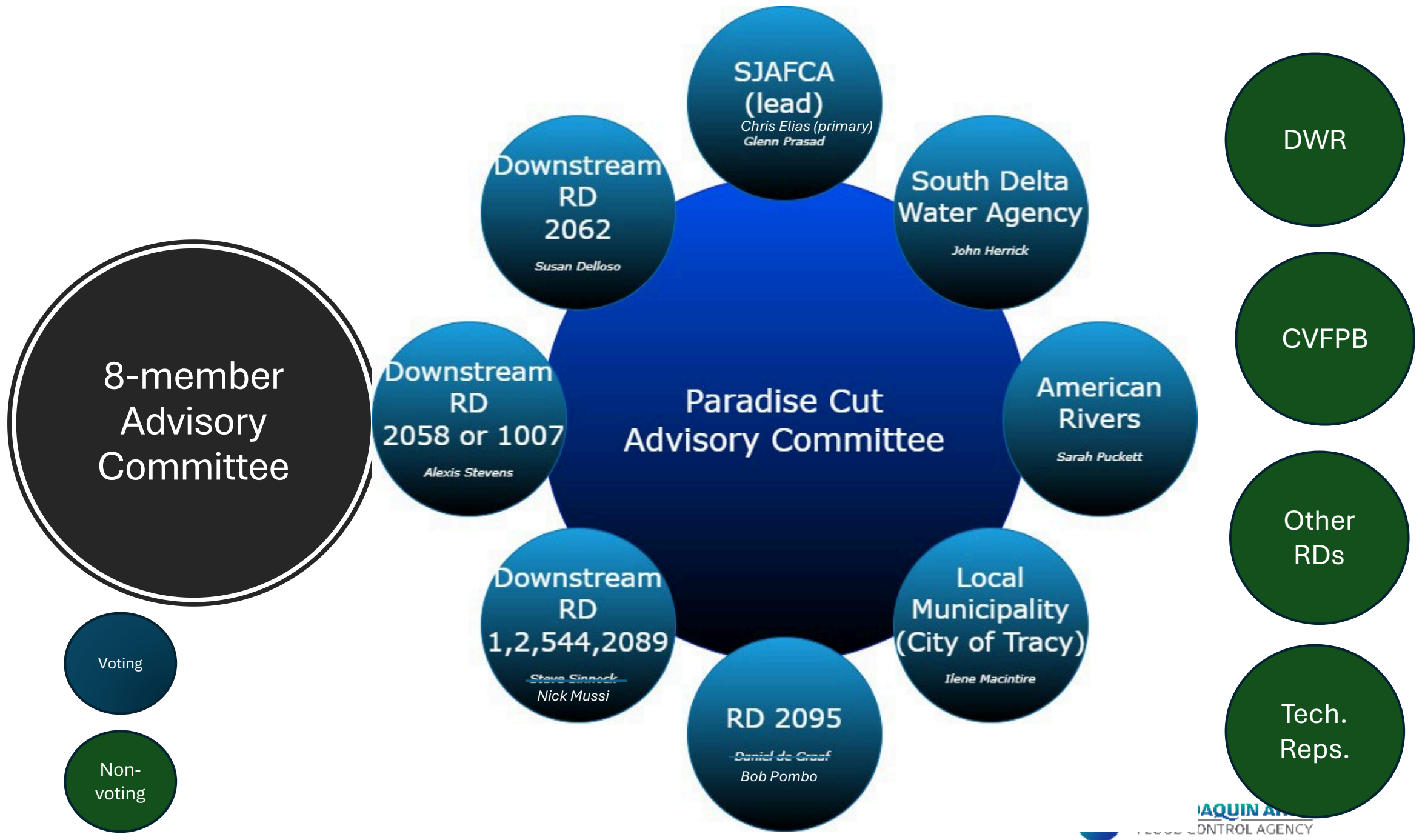
AGENCY	MEMBER	ALTERNATE
SJAFCFA	Chris Elias	Glenn Prasad
SDWA	John Herrick	Mary Hildebrand
American Rivers	Sarah Puckett	Julia Sullivan
City of Tracy	Ilene Macintire	Robin Kloepfer
RD 2095 (upstream)	Bob Pombo	TBD
RD1,2,544,2089 (downstream)	Nick Mussi	TBD
RD 2058, 1007 (downstream)	Alexis Stevens	Greg Pombo
RD 2062 (downstream)	Susan Dellosso	Ramon Batista

- Please send any changes to Leanne Randall:
leanne.Randall@stocktonca.gov



Project Status & Resourcing

- Presentation on Proposals and Workplan





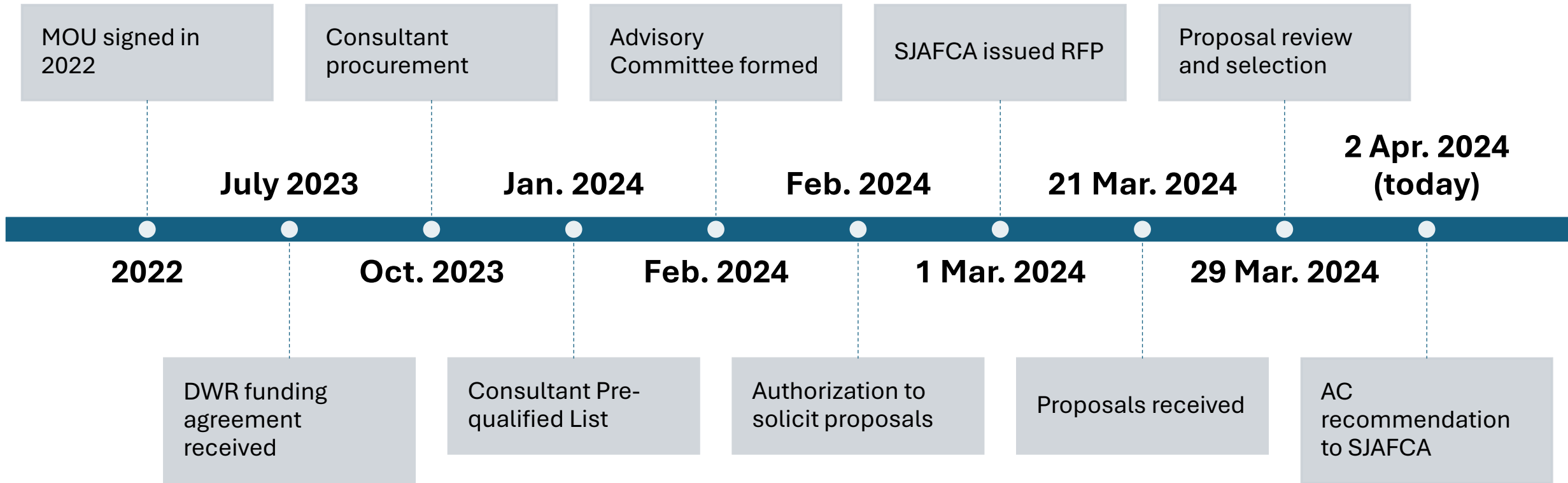
- Meets monthly
- Reviews project status
- Reviews items prior to Advisory Committee
- Provides direction & feedback to SJAFC staff

Paradise Cut Bodies and Teams

- Advisory Committee
- Paradise Cut Management Team
- Lead Agency – SJAFCA
- Facilitator (Consultant)
- Feasibility Study Lead (Consultant)
- Technical Review Panel



Phase 3 - Background & Timeline



Proposals Received:

- Total proposals received = 11
- Consultants = 8
- Feasibility Study Proposal = 1
- Facilitation Support = 2
- Program Management Support = 2
- Technical Review Proposal = 6
- Review Panel Members = 3

Consultant	Feasibility Study Consultant	Technical Review Panel	Program Management Support	Facilitation Support
Consero Solutions			X	X
Green Mountain Engineering		X		
LWA		X	X	X
Northwest Hydraulic Consultants		X		
R&F Engineering		X		
Wood Rodgers	X			
GEI		X		
Tetra Tech		X		
Reviewers	SJAFCA/ DWR/ City of Tracy	SJAFCA / DWR	SJAFCA/ DWR/ City of Tracy	SJAFCA/ DWR/ AC (City of Tracy)

Staff & Advisory Committee Recommendation for Facilitator

CONSEROSOLUTIONS

FACILITATION, OUTREACH AND ENGAGEMENT CONSULTANT

- Consero Solutions
- Petrea Marchand – Lead Facilitator
 - Prior experience with a number of local agencies/ RDs
 - Prior work includes Paradise Cut Bypass Expansion and South Delta Restoration Project
 - “tailors her approach to engagement based on her understanding of the intricacies of their geographical context and interest”
 - Will lead the Advisory Committee discussions and other outreach and engagement efforts on the project.

Proposed Facilitation Team and Overview of Major Tasks

**Paradise Cut Advisory
Committee Meeting**

April 2, 2024

CONSEROSOLUTIONS

The Consero Solutions Team



Petrea Marchand

Consero President
Project Lead/Facilitator



Danaka DeBow

Project Manager



Laura Duffy

Project Support



Avaree Jackson

Administrative Support

CONSEROSOLUTIONS



Located in Davis, California

12

Years in Business

6

**Years of Experience with
the Paradise Cut Project**

6

Core Services

About Consero Solutions

Proposed Paradise Cut Facilitation Tasks



Engagement Strategy

- Development of Engagement Strategy
- Updates as needed



Meeting Facilitation

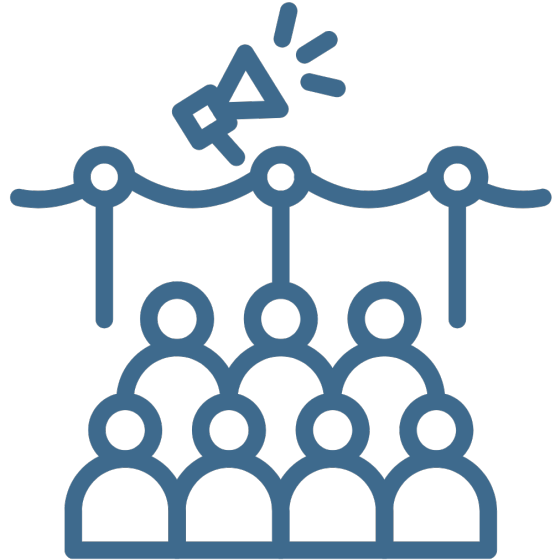
- Paradise Cut Management Team meetings
- Advisory Committee meetings
- Steering Committee meetings



Governance Charter Support

- Meeting facilitation
- Input and revisions

Proposed Paradise Cut Facilitation Tasks



Public Outreach

- Small group meetings
- Community workshops
- Newsletter



Other Support

- PowerPoint presentations
- Email responses
- FAQ sheet
- Additional meetings

Questions and Contact Information

We welcome your input and questions.
Thank you!



Consero Solutions
231 G Street, Suite 21 | Davis, CA 95616
Office: 530-746-2083

Staff Recommendation for Feasibility Study Consultant



FEASIBILITY STUDY CONSULTANT

- Wood Rodgers as prime consultant
 - Ric Reinhardt, PE as Project manager
 - Jonathan Kors, PE as Principal-in-charge
- HDR – Feasibility Study Report Preparation and Design Support
- ICF/ ESA – Environmental Surveys, Wetland Delineation, Biological and Cultural Studies, CEQA and NEPA consultation, Habitat Design Development and Sediment Transport analysis
- Anchor QEA – Dredging Analysis and Design; Dredge Permitting
- River Partners – Property Acquisition & Real Estate Support
- MBK – Hydrology and Hydraulic Engineering Services
- Extensive experience with Planning and Levee Design.

Staff Recommendation for Facilitator



PROJECT MANAGEMENT SUPPORT

- LWA
- Eric Nagy as Principal-in-Charge
- Melissa Weymiller as Project Manager
 - Prior experience with similar projects led by DWR and USACE.
 - Focus on partnerships and long-term strategies
 - Will provide as-needed services to meet requirements of DWR Funding Agreement

Project Management

Paradise Cut Bypass Expansion and Multi-Benefit Project



LWA

LARSEN WURZEL
& Associates, Inc.



What does success look like?

- Finding an acceptable balance between flood risk reduction, ecosystem needs, agriculture, water supply, and water quality.
- Having diverse support from key interests and project partners.
- Developing a successful framework and funding stream for Phase 4.



How do we get there?

- Efficient and Effective Program Delivery
 - Project Management
 - Delivering on the Scope, Schedule, and Budget
 - Managing the Various Governance Models
 - Financial Management
 - Technical Expertise
 - Knowledge and Relationships around Paradise Cut and Regional Issues
- Strategic Insight
 - Avoid Problems First, Solve Problems when Needed
 - Assess Project Needs and Deliver Positive Outcomes

Effective Management

- Building Durable Relationships
 - Federal, State, Local
 - Experience with DWR Projects
 - Upper Yolo Planning
 - Yolo Bypass Partnership
 - Floodplains Reimagined
- Bridge Differences
 - Develop a Coalition that Advocates for the Current and Future Project Phases
- Inclusiveness, Increased Awareness, and Successful Engagement
 - Building Support for One Multi-Benefit Solution





Regional Experience

- Projects
 - Little Egbert Multi-Benefit Project
 - Hamilton City Project
 - Lathrop & Manteca Feasibility Study
 - Mossdale UFRR Project
 - Regional Flood Management Plan
- Partnerships
 - SJAFCFA
 - Reclamation Districts
 - DWR
 - Resource Agencies



Program Management Tasks

- Develop a strategy for successfully achieving project commitments, financing, agency outreach, project governance, and implementation/delivery.
- Tracking and management of the project schedule, scope, and budget.
- Coordinate with key federal, state and/or local agencies or stakeholders concerning the Project
- Collaborate with SJAFCA and other team members regarding how to communicate study content effectively and how to successfully resolve identified issues.
- Synthesize and summarize study progress for progress reporting.
- Coordinate the review of interim study deliverables and supporting technical documents by the feasibility study technical team.
- Provide as-needed program management services to assist SJAFCA meet the requirements of Task 1 of the DWR funding agreement.

Staff Recommendation for Technical Review Panel



TECHNICAL REVIEW PANEL

- Technical Disciplines
 - Civil/ Geotechnical
 - Environmental and Permitting
 - Hydraulic and Hydrologic Modeling
 - Delta/ Regulatory Expert
- Consultant Proposals Reviewed
 - GEI
 - LWA/ River Delta Consulting
 - R&F Engineering
 - Green Mountain Engineering
 - Tetra Tech
 - Northwest Hydraulic Consulting
- SJAFCA in collaboration with the Paradise Cut Management Team will engage with any these consultants as needed to form the technical review panel, which may include members outside these consultants.

Schedule

- Foreseeable delays
 - Feasibility Study completion by July 8, 2025 (+4 mos)
 - 10% designs completed by September 30, 2025 (+2 mos)
- Alignment with an aggressive scope
- Scope, Schedule and Budget are now better informed by proposals
- Better positioned for State (and Fed) funding
- Engage with DWR for integration with a larger scope, leveraging future State funds
- Manage an integrated schedule with key decision points and risk factors identified, and obtain alignment with required project deliverables

Proposed Budget and Fiscal Impact

- Proposed budget from the consultants are within the DWR grant funding agreement
- Cashflow to be addressed
- Budget augmentation will be needed for:
 - Road map development & securing additional funding
 - Sediment data collection and planning
 - Support for Federal Study
 - Development of Design documents

DWR Work Plan Tasks and Final Budgets	DWR Budget
Task 1 - Project Management and Administration	\$ 425,000.00
Task 2 - Technical Review Panel	\$ 175,000.00
Task 3 - Strategic Outreach and Local Engagement	\$ 350,000.00
Task 4 - Feasibility Study	\$ 1,750,000.00
Task 5 - Preliminary Engineering and Landscaping Designs	\$ 300,000.00
	\$ 3,000,000.00

Next Steps

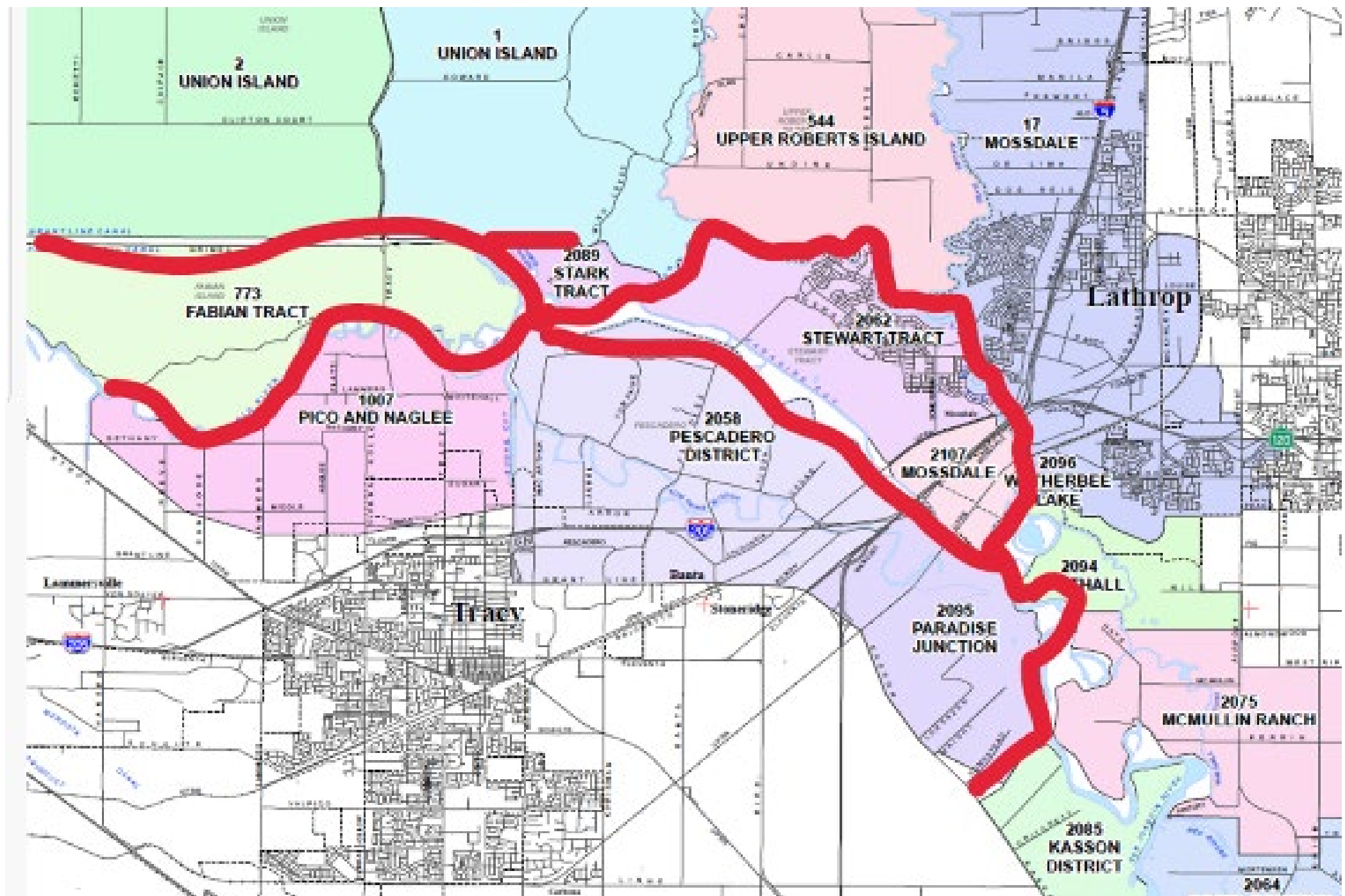
SJAFCA will

- Proceed with negotiations and enter into consulting agreements
 - Continue engagement with Paradise Cut Management Team
 - Execute project components with appropriate stakeholders
 - Feasibility Study
 - Outreach Engagement
 - Execute any needed amendments with DWR
-
- **ACTION:** Recommendation to SJAFCA Board to approve consulting agreements with Consero Solutions, Wood Rodgers, and Larsen Wurzel & Associates Inc. for Paradise Cut Bypass Expansion and Multi-Benefit Project and authorize the Executive Director to execute agreements needed to form the technical review panel for the Project in collaboration with the Paradise Cut Management Team.

AC Agenda

1. Administrative Matters:
 - A. Roll Call/ Sign up sheet
 - B. Approval of Meeting Minutes and consensus on meeting notes format.
 - C. Confirmation of Members and Alternates
2. Project Status and Resourcing [Possible Action]
 - A. Presentation on Proposals and Overall Workplan
 - B. Recommendation to SJAFCA Board to approve consultants for the Paradise Cut Bypass Expansion and Multi-Benefit Project [Possible Action]
3. State Updates (DWR, CVFPB)
4. Advisory Committee Comments/ Items for Future Agenda
5. Public Comment
6. Adjournment

Adjourned



SECTION C | TEAM EXPERIENCE

Project Team Organizational Chart

Wood Rodgers has assembled the following multi-disciplinary team with specialty subconsultants to deliver the Paradise Cut Bypass Expansion and Multi-benefit project. The individuals shown have been selected based upon their experience and expertise in serving similar programs, as well as their availability to commit to projects from initiation through construction. Following the organizational chart are brief professional biographic summaries for the key project team members. **Focused resumes for Key Staff are included within the Appendix. Resumes for support staff can be provided upon request.**

Our Commitment to SJAFCA

Wood Rodgers will not substitute or reassign any of the listed team members without prior consent and written approval from Santa Clarita Valley Water Agency. Wood Rodgers is able and willing to work assigned sub-consultants approved by San Joaquin Area Flood Control Agency.



GLEN PRASAD, MSCE, PE

PROGRAM MANAGER

■ SJAFCA Consultant - TBD



PRINCIPAL-IN-CHARGE

■ Jonathan Kors, PE

PROJECT MANAGEMENT



PROJECT MANAGER

■ Ric Reinhardt, PE



ASSISTANT PROJECT MANAGER

■ Joe Bartlett, PE

SUBJECT MATTER EXPERTS / QUALITY CONTROL

■ Pete Tobia, PE, LEED AP ■ Tom Lagerquist
■ John Cain ■ Mike Inamine, PE
■ Bill Eisenstein

FACILITATOR

■ SJAFCA Consultant - TBD

PLAN FORMULATION

FEASIBILITY REPORT

■ Kenric Jameson, PG, PMP
■ Jafar Faghieh
■ Avery Livengood

HYDROLOGY & HYDRAULIC ENGINEERING

HYDRAULICS ANALYSIS

■ Don Trieu, PE
■ Mike Archer

GEOLOGY & GEOTECHNICAL

GEOTECHNICAL ANALYSIS

■ Michael Hughes, PE
■ Colin Minard, PE
■ Dmitriy Lukashov, PG

ENVIRONMENTAL PLANNING

HABITAT DESIGN

■ Andy Collison

ENVIRONMENTAL PLANNING/PERMIT

■ Amy Gilmore
■ Chris Elliot

DREDGING PLANNING

■ Katie Chamberlain

CIVIL ENGINEERING / SURVEYING

CIVIL ENG./SURVEY

■ Peter Blum, PE
■ Matt Zimmerman, EIT

DREDGING ANALYSIS & DESIGN

DREDGE DESIGN

■ Megan Collins, PE
■ Tom Wang, PE

WATER QUALITY IMPACTS

■ Aaron Beaver, Ph.D.

SEDIMENT CHARACTERIZATION

■ Chris Osuch

SEDIMENT TRANSPORT ANALYSIS

■ John Pritchard, PE
■ Justin Gragg, PE
■ Chris Osuch

**PROPERTY ACQUISITION STRATEGY /
REAL ESTATE SUPPORT**



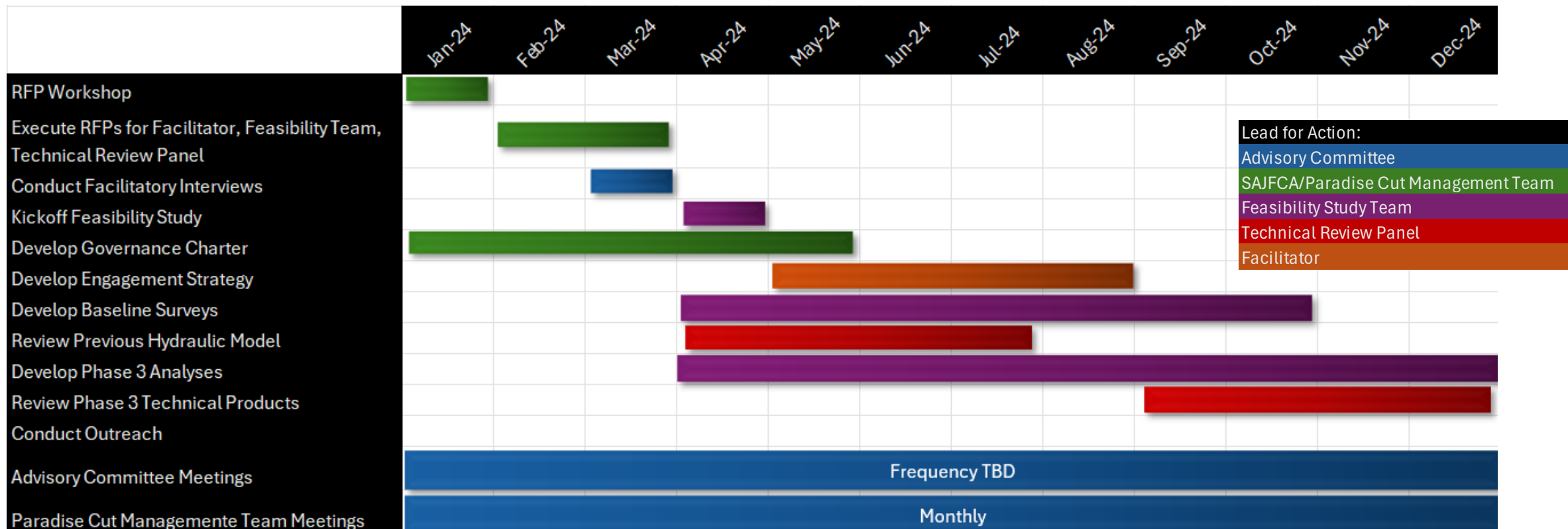
■ Maggie Blankinship

BOLD font & headshots indicates Key Staff

TEAM COMPOSITION

■ Wood Rodgers, Inc. ■ Anchor QEA
■ River Partners ■ ESA
■ HDR ■ ICF
■ MBK ■ SJAFCA Consultant - TBD

Project Schedule – Year 1



Project Schedule – Year 2

Lead for Action:
Advisory Committee
SAJFCA/Paradise Cut Management Team
Feasibility Study Team
Technical Review Panel
Facilitator

